


# IATA WORLD AIR TRANSPORT STATISTICS 2017

Key facts and figures summarizing the air transport industry's performance in 2016. For more information, go to [www.iata.org/WATS](http://www.iata.org/WATS)

**7.4%**  
Industry-wide revenue passenger kilometers (RPK) grew by 7.4% in 2016



**3.6%**  
Industry-wide air freight tonne kilometers (FTK) grew by 3.6% in 2016, nearly double its five-year average pace (2.0%)



| Top 10 passenger airlines (by RPK) |         |
|------------------------------------|---------|
| American Airlines                  | 320,044 |
| Delta Air Lines                    | 308,088 |
| United Airlines                    | 299,080 |
| Emirates                           | 270,797 |
| China Southern Airlines            | 205,720 |
| Southwest Airlines                 | 200,848 |
| Lufthansa                          | 149,702 |
| British Airways                    | 144,028 |
| Ryanair                            | 142,740 |
| China Eastern Airlines             | 138,042 |

| Top 10 cargo airlines (by FTK) |        |
|--------------------------------|--------|
| Federal Express                | 15,712 |
| Emirates                       | 12,270 |
| United Parcel Service          | 11,264 |
| Cathay Pacific Airways         | 9,947  |
| Qatar Airways                  | 9,221  |
| Korean Air                     | 7,666  |
| Lufthansa                      | 7,384  |
| Cargolux                       | 6,878  |
| Singapore Airlines             | 6,345  |
| Air China                      | 6,089  |

**\$5.5 trillion**

IATA estimates that the value of international trade shipped by air in 2016 was \$5.5 trillion and that tourists travelling by air spent around \$650 billion

**37 million**

The domestic China passenger market saw the biggest incremental change in journey numbers, with 37 million more passenger journeys made in 2016 than in the year before. This increase was more than in the next two largest gaining markets—domestic United States and domestic India—combined

**80.4%**

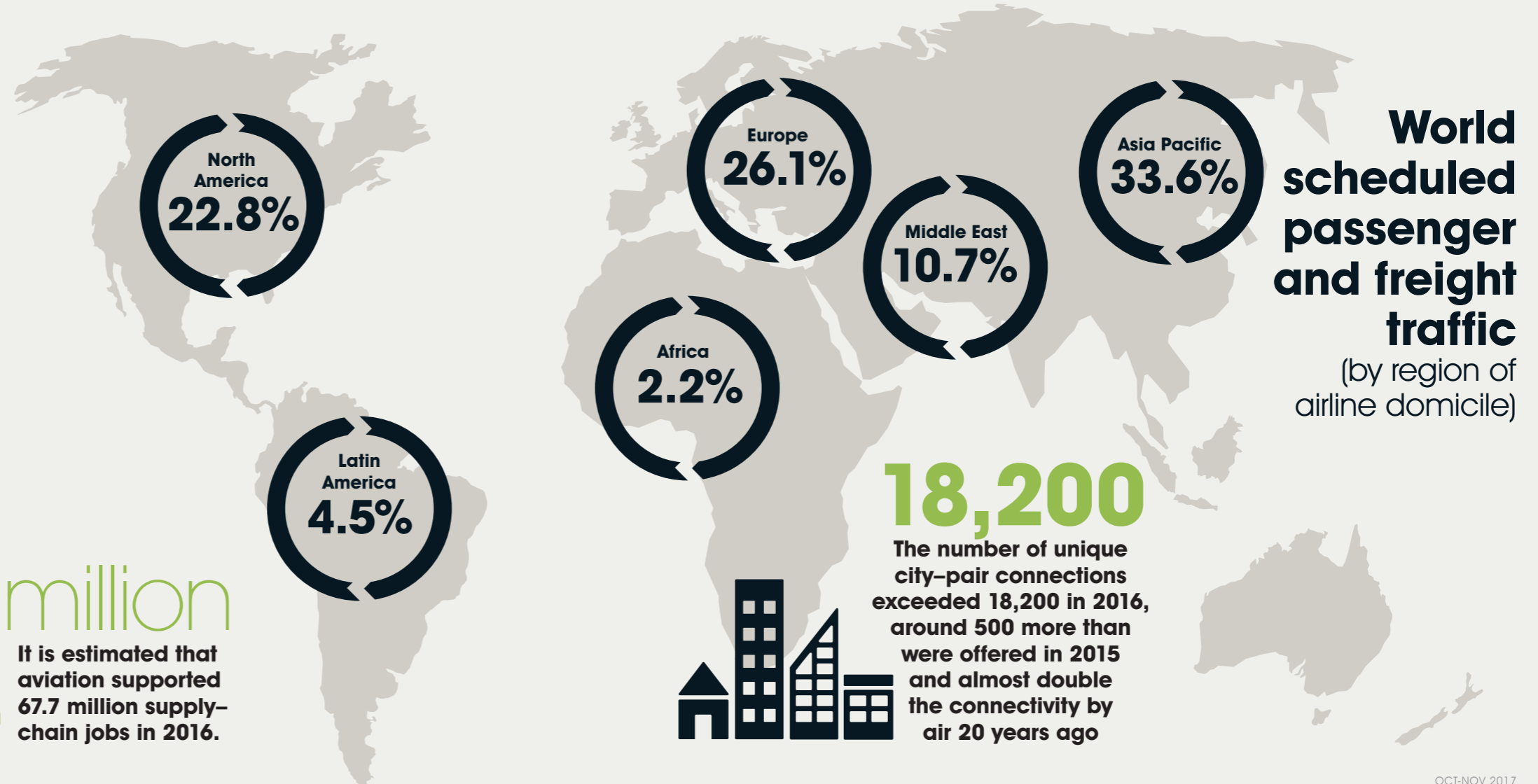
Passenger load factor at an all-time high of 80.4%



**Freight load factor**  
**46.9%**

**67.7 million**

It is estimated that aviation supported 67.7 million supply-chain jobs in 2016.



**18,200**

The number of unique city-pair connections exceeded 18,200 in 2016, around 500 more than were offered in 2015 and almost double the connectivity by air 20 years ago